

# Using the Library of Congress H Classification

May 2, 2012

**Louise Ratliff**

**Social Sciences and Map Catalog Librarian  
Cataloging & Metadata Center  
UCLA**

# Session Outline

- Organization of the H Schedule
- Tables
  - Regions and Countries Table
  - Internal tables
  - External tables
- Examples
- List of resources



# H Schedule Organization

- H-HA Social sciences (general)
- HB-HJ Economics
- HM-HX Sociology
- Tables No. 1-78

# Types of Tables

- Regions and Countries Table (G300)
  - Tables of states (H uses its own)
- Internal tables
  - Within the H schedule in specific places
- External tables
  - Numbered 1-78 at end of H schedule (printed)

# Applying the Regions and Countries Table and Table of States



# Regions and Countries Table example

Author: Conde Bonfil, Carola.

Title: Realidad, mitos y retos de las microfinanzas en México.

Published: 2009

Subject: Microfinance – Mexico.



# Regions and Countries Table example

## Microfinance

HG 178.3                      General works

HG 178.33.A-Z              By region or country, A-Z

## Regions and Countries Table

Mexico                      M6

Classification number + Author Cutter + Publication year

HG178.33.M6 C664 2009

# Table of States example

Author: Hanak, Ellen.

Title: Water for growth : California's new  
frontier

Published: 2005

Subject: Water-supply -- California.





# Table of States example

*Industries. Land use. Labor—Agricultural economics—Water resources development.  
Water supply—By region or country—America—United States*

By region or country

HD1693

America

United States

HD1694.A1-.A15

Periodicals. Serials

HD1694.A2

Water resources shared by the United States and  
Canada

HD1694.A3

Water resources shared by the United States and Mexico

HD1694.A5

General works

HD1694.A6-.W

States, A-W

HD1695.A-Z

Local, other than states, by river, etc., A-Z

e. g.

HD1695.A8

Arkansas River

Rio Grande see [HD1694.A3](#)

# Table of States example

*Industries. Land use. Labor—Agricultural economics—Water resources development.  
Water supply—By region or country—America—United States*

HD1694.A6-.W      States, A-W

Table of States (Cutter number) Table H28  
California      C2

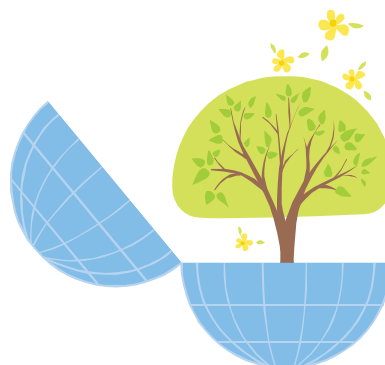
Classification number + Author Cutter + Publication year  
HD1694.C2    H25    2005

# Questions?



Hosted by ALCTS

# Applying Internal Tables



# Internal tables

*Industries. Land use. Labor—Agricultural economics—Water resources development.  
Water supply—By region or country—America*

HD1693	America
	United States
HD1694.A1-.A15	Periodicals. Serials
HD1694.A2	Water resources shared by the United States and Canada
HD1694.A3	Water resources shared by the United States and Mexico
HD1694.A5	General works
HD1694.A6-.W	States, A-W
HD1695.A-Z	Local, other than states, by river, etc., A-Z
	e. g.
HD1695.A8	Arkansas River
	Rio Grande see <a href="#">HD1694.A3</a>
	Other American regions and countries
HD1696.A-Z	By region or country, A-Z

# Internal table example

HD INDUSTRIES. LAND USE. LABOR

Agricultural economics

Water resources development. Water supply

By region or country

America

Other American regions and countries

**HD1696.A-Z**

**By region or country, A-Z**

**Under each country:**

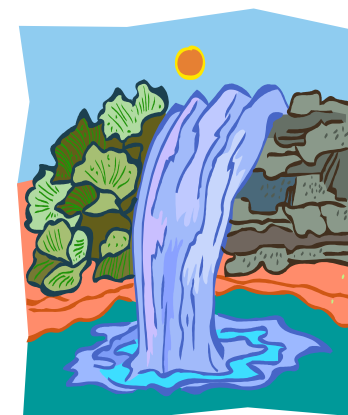
**.x General works**

**.x3A-.x3Z By state, province, etc., A-Z**

**.x4A-.x4Z Other local, A-Z**

# Internal table example

Author: S.  
Title: El agua, abundancia o escasez  
Published: 2009  
Subject: Water-supply – Mexico – Guerrero (State)



# Internal table example

HD1696.A-Z	By region or country, A-Z
	Under each country:
.X	General works
.x3A-.x3Z	By state, province, etc., A-Z
.x4A-.x4Z	Other local, A-Z

## Water supply – Mexico -- Guerrero (State)

HD 1696.A-Z By region or country, A-Z

From Regions and Countries Table:

Mexico **M6** → HD1696.**M6**



# Internal table example

HD1696.A-Z

By region or country, A-Z

Under each country:

.x                      General works

**.X3**A-.x3Z        By state, province, etc., A-Z

.x4A-.x4Z        Other local, A-Z

Internal table for “by state, province, etc., A-Z”

By state    M6 + 3 = M6**3**        HD1696.**M63**

# Internal table example

HD1696.A-Z	By region or country, A-Z
	Under each country:
.x	General works
.x3A-.x3Z	By state, province, etc., A-Z
.x4A-.x4Z	Other local, A-Z

Internal table for “by state, province, etc., A-Z”

By state M6 + 3 = M63 HD1696.M63

Cutter Table for Guerrero

Guerrero **G84** → HD1696.M63 **G84**

# Internal table example

HD1696.A-Z

By region or country, A-Z

Under each country:

- .x General works
- .x3A-.x3Z By state, province, etc., A-Z
- .x4A-.x4Z Other local, A-Z

Cutter for **Guerrero** + Main Entry (**Bustamante Alvarez**)

**G84 + 3**

HD1696.M63 G843

Year of publication

2009

Call number

HD1696.M63 G843 2009

# Internal table example summary

## Add to HD1696

By region or country, A-Z

M6

HD1696.M6

Internal table for “by state”

By state M6 + 3 = M63

HD1696.M63

Cutter Table for Guerrero

Guerrero G84

HD1696.M63 G84

Cutter for Bustamante Alvarez

Main Entry = G843

HD1696.M63 G843

Year of publication

HD1696.M63 G843 2009

# Internal Table for Special Topics

Special case internal table used throughout schedule “H” but only defined here:

HC79.A-Z      Special topics, A-Z

Class here only general works on these topics

For these topics in specific geographic areas see HC94+

# Internal Table for Special Topics

Example:

Title: The economics of pollution control

Published: 2010

Subject: Pollution – Economic aspects



HC79.P55 + E264 + 2010

# Internal Table for Special Topics

Using a Special Topic Cutter number with .Z9

Title: Poverty profile for Nigeria : Federal Republic of  
Nigeria, 2005

Published: 2006

Subject: Poverty – Nigeria

*Economic history and conditions—By region or country—Africa—West  
Africa. West Coast—Nigeria*

HC1055      Nigeria      [TABLE H17](#)

# Internal Table for Special Topics

Table #17 for economic history and conditions, by country  
 (1 no.) (as applied to Nigeria, HC1055)

HC1055	.A1	Periodicals. Societies. Serials
HC1055	.A5-.Z6	General Works
HC1055	.Z65	Natural resources
HC1055	.Z7A-.Z7Z	Local, A-Z
<b>HC1055</b>	<b>.Z9A-.Z9Z</b>	<b>Specific topics (not elsewhere provided for), A-Z</b>

For list of topics, see HC79.A-Z

For special topics in areas within a country, see "Local," above



# Internal Table for Special Topics

Example from Library of Congress shelflist:

HC1055.Z9 P6228 2003	Poverty in Nigeria
HC1055.Z9 <b>P6229</b> 2005	Poverty profile for Nigeria 2004
HC1055.Z9 <b>P62293</b> 2006	Poverty profile for Nigeria : Federal ...
HC1055.Z9 <b>P623</b> 1999	Poverty profile for Nigeria : a statistical...
HC1055.Z9 P625 2001	Research and policy directions on poverty

# Questions?



# Applying External Tables



# External tables

- Used to extend the classification within subclasses
- Applied when specifically instructed
- Tables #1-78
- Located at end of H schedule (print version)
- Classification Web – “Tables” tab

# External table example: H20

## Precious stones

HD9676

General works [TABLE H20](#)

HD9677

Diamonds [TABLE H20](#)

For diamond thin films see [HD9999.T49-.T494](#)

Other, A-Z

## Emeralds

HD9678.E57

Periodicals. Societies. Serials

HD9678.E58

General works

Including biography

HD9678.E59A-.E59Z

By region or country, A-Z

HD9678.E6A-.E6Z

Firms, A-Z

# Table H20

## Table for industries and trades (1 no.)

H20 .A1            Periodicals. Societies. Serials

H20 .A2            General works

H20 .A4-.Z        By region or country, A-Z

Subarrange each country as follows: .x = Periodicals. Societies. Serials; .x2 = General works. History (including biography, A-Z); .x3A-Z = Local, A-Z; .x4A-Z = Firms, etc., A-Z

# Table H20 (re-formatted)

**HD9677**

**Diamonds** TABLE H20

**Table for industries and trades (1 no.)** (as applied to HD9677)

HD9677 .A1 Periodicals. Societies. Serials

HD9677 .A2 General works

HD9677 .A4-.Z By region or country, A-Z

Subarrange each **country** as follows:

.x Periodicals. Societies. Serials

.x2 General works. History (including biography, A-Z)

.x3A-Z Local, A-Z

.x4A-Z Firms, etc., A-Z

# Table H20 example (1)

Author: Campbell, Greg.

Title: Blood diamonds

Published: 2002

Subject: Diamond industry and trade – Social aspects –  
Sierra Leone.





# H20 table example (2)

HD9677.**A4-.Z** By region or country, A-Z

Subarrange each **country** as follows:

.x	Periodicals. Societies. Serials
.x2	General works. History (including biography, A-Z)
.x3A-Z	Local, A-Z
.x4A-Z	Firms, etc., A-Z

## Diamond industry and trade – Social aspects – Sierra Leone

HD 9677.A-Z By region or country, A-Z

Regions and Countries Table

Sierra Leone **S5** → HD9677.**S5**

# H20 table example (3)

HD9677.A4-Z By region or country, A-Z

Subarrange each **country** as follows:

.x	Periodicals. Societies. Serials
<b>.x2</b>	General works. History (including biography, A-Z)
.x3A-Z	Local, A-Z
.x4A-Z	Firms, etc., A-Z



HD9677.S5 + 2 = HD9677.S52

# Table H20 example (4)

Author: Campbell, Greg.

Title: Blood diamonds

Published: 2002

Subject: Diamond industry and trade – Social aspects –  
Sierra Leone.

HD9677.S52 C36 2002



The diagram consists of two black arrows. The first arrow starts at the word 'Blood' in the 'Title' field and points to the 'C36' part of the call number. The second arrow starts at the year '2002' in the 'Published' field and points to the '2002' part of the call number.

# Questions?



# Summary

- The H classification schedule uses three types of tables:
  - Tables of general application
    - Regions and countries
  - Internal tables
  - External tables



# References

A detailed **outline** is available from the “Library of Congress Classification” web page

<http://www.loc.gov/catdir/cpsolcc.html>

and on its own page, “Library of Congress Classification Outline”

<http://www.loc.gov/catdir/cpsolcco/>

Select either the web version or the Word document version for individual classification letters

“H” Word: [http://www.loc.gov/aba/cataloging/classification/lcco/lcco\\_h.doc](http://www.loc.gov/aba/cataloging/classification/lcco/lcco_h.doc)

“H” PDF: [http://www.loc.gov/aba/cataloging/classification/lcco/lcco\\_h.pdf](http://www.loc.gov/aba/cataloging/classification/lcco/lcco_h.pdf)

# References (2)

For ***general information*** about classification schedules and general tables, see the Classification and Shelving Manual, specifically sections:

- G 58 Interpreting the Classification Schedules
- G 63 Cutter Numbers (includes Cutter Table)
- G 240 Societies Table
- G 300 Regions and Countries Table
- G 302 U.S. States and Canadian Provinces (not used in H Classification)
- G 320 Biography
- G330 Artists
- G340 Criticism/Commentaries

# *Thank You!*

Louise Ratliff

lratliff@library.ucla.edu